

... GOING PLACES





DATSUN

"1200" SEDAN

Going places . . . and five's company in the all-new "1200" family sedan! It's a crisply styled compact with big car characteristics — solidly engineered from bumper to bumper to give you brisk, 80 mph performance, dependable economy with up to 40 mpg! Standard equipment includes synchromesh on all 3 forward speeds, whitewall tires, heater and turn signals.



DATSUN

"1200" STATION WAGON

Going places . . . and here's the wagon to hitch your star to! Beautifully built, the new "1200" Station Wagon gives you a full 62 cubic feet of cargo space PLUS the convenience of four doors — rugged, go-anywhere suspension — high cruising speed with up to 40 miles-per-gallon economy — full height single lift gate for easy loading — full synchromesh on all 3 forward gears, whitewalls, heater and turn signals.



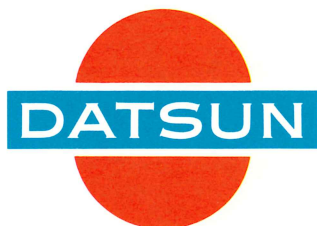
DATSUN "CEDRIC" SEDAN

Going places . . . and in style! This luxury sedan represents unbelievable value by any standard — the solidly built unitized body surrounds you with quiet, limousine comfort — the flexible, powerful engine whisks you to highway speeds smoothly and effortlessly — light, positive steering makes long trips a joy, parking a cinch! With the remarkable CEDRIC you have the best of both worlds — big car comfort, performance and looks — compact car economy.



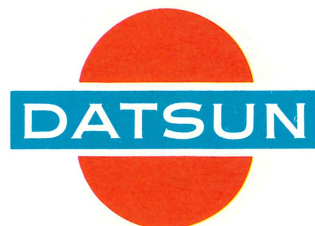
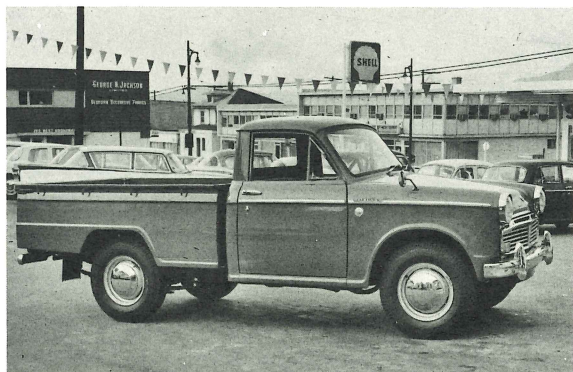
"1500" SPORTS

Going places . . . and you have to be quick off the mark to catch this one! DATSUN engineers have created an exciting new sports car that demands attention on road or track. Docile and easy to handle in traffic, the "1500" Sports will take off like a tiger when you're ready to GO! Lean classic lines say every inch a thoroughbred — and you can take two along for the ride with the neat occasional seat in the rear!



DATSUN "1200" PICKUP

This sturdy, compact workhorse packs a big 2,000 lb. payload and makes business a pleasure! Comfortable passenger type cab is roomy, quiet and vibration-free . . . and the great-hearted DATSUN engine is a real gas miser, to make this one of the most economical commercial vehicles on Canada's roads today!



DATSUN "PATROL"

Here's sure-footed 4-wheel drive to give you real cross country performance! The PATROL goes where other vehicles can't, yet rides the highway like a luxury car. It carries up to 6 adults, or payloads of up to 1000 lbs., and features rear-opening doors for added ease of loading.





DOUG'S AUTOMOTIVE LTD.
527 - 12th STREET
NEW WESTMINSTER, B. C.
PHONE 521-4420

ROTARY MOTORS LTD.
60 WEST BROADWAY
VAN. 10, B. C.

Canadian

DATSUN

GOING PLACES!

DATSUN Cars and Commercial Vehicles are made by NISSAN MOTOR CO. LTD. and exported to more than 80 countries throughout the world. With five large, ultra-modern plants constantly expanding to meet demand, NISSAN is now the fastest-growing contender in the world's automotive markets. Extensive design and research facilities, thorough product proving, and new production techniques all go into making DATSUN vehicles the best in their class, bar none. Only DATSUN dares to compare!

DATSUN Dealers across Canada maintain a complete inventory of parts; factory-trained servicemen are ready to help you keep your DATSUN in top running order. Now . . . GO PLACES with DATSUN, Canada's most sensible auto buy!

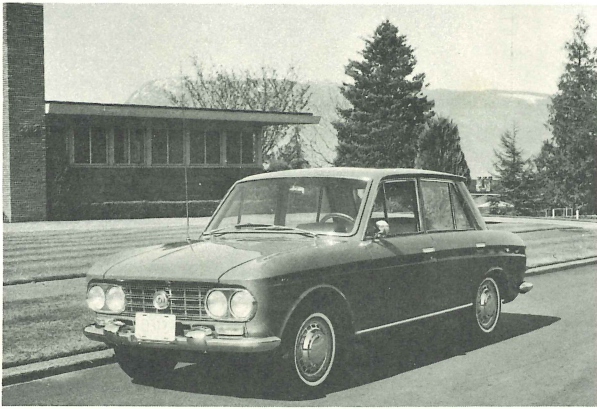
manufactured by:

NISSAN MOTOR COMPANY LTD.
Tokyo, Japan

factory representative:

NISSAN MOTOR CO. OF B.C. LIMITED
1700 West Third Ave., Vancouver, B.C.
phone 738-3433

SPECIFICATIONS



DATSUN "1200" SEDAN

ENGINE: 4-cylinder 1,189 cc., o.h.v., water-cooled / bore: 2.88 in., stroke: 2.80 in. / 60 BHP @ 5000 rpm / Compression ratio: 8.2:1.

DIMENSIONS: Length overall: 157.4 in. / Width overall: 58.7 in. / Height overall: 54.8 in. / Wheelbase: 93.8 in. / Weight: 1,947 lbs. / Capacity: five adults.

IGNITION: 12-volt system, coil and distributor with automatic controller.

SUSPENSION: Independent front coil, semi-elliptic spring rear. / Rear axle hypoid bevel, semi-floating, with 5.375 ratio on the three speed gear box, 4.111 for four speed gear box.

TRANSMISSION: With column shift: 3 speeds forward, 1 reverse. / Full synchromesh on all forward speeds. / Ratios: 1st 3.518, 2nd 1.725, 3rd 1.000, reverse 4.583.

With floor shift: 4 speeds forward, 1 reverse. / Synchromesh on 2nd, 3rd and top. / Gear ratios: 1st 3.945, 2nd 2.403, 3rd 1.490, top 1.000, reverse 5.159.

WHEELS AND TIRES: Steel disc wheels, 5.60 x 13. Whitewalls fitted as standard.

INSTRUMENTS: Speedometer, fuel gauge, water temperature gauge, oil pressure warning light. / Heater and turn signals fitted as standard equipment.

PERFORMANCE: Max. speed: 80 mph. / Min. turn radius: 16 ft. / Fuel economy: up to 40 mpg. / Tank capacity: 11.0 U.S. gals.



DATSUN "1200" STATION WAGON

ENGINE: 4-cylinder, 1,189 cc, o.h.v. / bore: 2.88 in., stroke: 2.80 in. / 60 BHP @ 5000 rpm. / Compression ratio: 8.2:1.

DIMENSIONS: Length overall: 157.4 in. / Width overall: 58.7 in. / Height overall: 55.2 in. / Wheelbase: 93.8 in. / Weight: 2,112 lbs. / Capacity: 62 cu. ft. cargo space with rear seat folded.

IGNITION: 12-volt system, coil and distributor with automatic controller.

SUSPENSION: Independent coil front, semi-elliptic spring rear / Rear axle hypoid bevel, with 4.375 ratio.

TRANSMISSION: With column shift: 3 speeds forward, 1 reverse. / Full synchromesh on all forward speeds. / Ratios: 1st 3.518, 2nd 1.725, top 1.000, reverse 4.125.

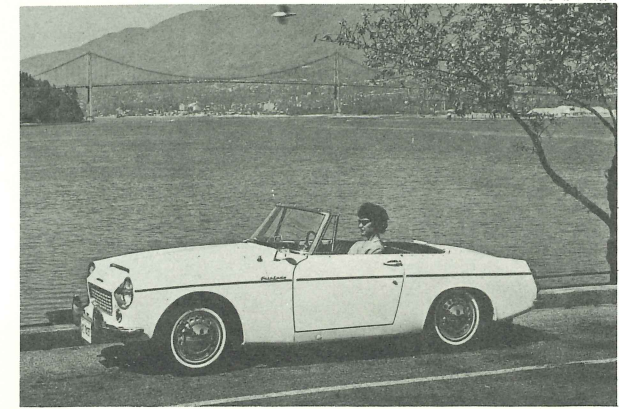
With floor shift: 4 speeds forward, 1 reverse / Synchromesh on 2nd, 3rd and top. / Ratios 1st 3.945, 2nd 2.403, 3rd 1.490, top 1.000, reverse 5.159.

Clutch: 7.24 in. single dry disc with cushioning spring.

WHEELS AND TIRES: Steel disc wheels, 5.60 x 13. Whitewalls fitted as standard.

INSTRUMENTS: Speedometer, fuel gauge, water temperature gauge, oil pressure warning light. / Heater and turn signals fitted as standard equipment.

PERFORMANCE: Max. speed: 80 mph. / Min. turning radius: 16 ft. / Fuel economy: up to 40 mpg. / Tank capacity: 11.0 U.S. gals.



DATSUN "1500" SPORTS

ENGINE: 4-cylinder, 1,488 cc, o.h.v. / bore: 3.15 in., stroke: 2.91 in. / 85 BHP @ 5600 rpm. / Max. torque: 92 ft. lbs. @ 4400 rpm / Compression ratio: 9.0:1.

DIMENSIONS: Length overall: 155.6 in. / Width overall: 58.9 in. / Height overall: 50.2 in. / Wheelbase: 89.8 in. / Weight: 2,365 lbs. / Capacity: 3 adults.

IGNITION: Coil and distributor with automatic mechanical and vacuum controls.

FUEL SYSTEM: Variable venturi, side draft type twin carburetors. / Mechanical type diaphragm pump.

ELECTRIC SYSTEM: 12-volt, 300-watt alternator with Tirrill's voltage regulator. / 1.4 HP magnetic shift starter motor.

TRANSMISSION: 4 forward, 1 reverse. / Full synchromesh on 2nd, 3rd and top gears. / Gear ratios: 1st: 3.515, 2nd: 2.140, 3rd: 1.328, 4th: 1.000, Reverse: 4.597 / Floor gear shift.

STEERING: Cam and lever type, ratio 14.8:1.

INSTRUMENTS: Speedometer with mileage recorder, tachometer, fuel gauge, temperature gauge, oil pressure warning light.

PERFORMANCE: Max. speed: 96 mph
Min. turning radius: 16 ft.

SPECIFICATIONS



DATSUN "1200" SEDAN

ENGINE: 4-cylinder 1,189 cc., o.h.v., water-cooled / bore: 2.88 in., stroke: 2.80 in. / 60 BHP @ 5000 rpm / Compression ratio: 8.2:1.

DIMENSIONS: Length overall: 157.4 in. / Width overall: 58.7 in. / Height overall: 54.8 in. / Wheelbase: 93.8 in. / Weight: 1,947 lbs. / Capacity: five adults.

IGNITION: 12-volt system, coil and distributor with automatic controller.

SUSPENSION: Independent front coil, semi-elliptic spring rear. / Rear axle hypoid bevel, semi-floating, with 5.375 ratio on the three speed gear box, 4.111 for four speed gear box.

TRANSMISSION: With column shift: 3 speeds forward, 1 reverse. / Full synchromesh on all forward speeds. / Ratios: 1st 3.518, 2nd 1.725, 3rd 1.000, reverse 4.583.

With floor shift: 4 speeds forward, 1 reverse. / Synchromesh on 2nd, 3rd and top. / Gear ratios: 1st 3.945, 2nd 2.403, 3rd 1.490, top 1.000, reverse 5.159.

WHEELS AND TIRES: Steel disc wheels, 5.60 x 13. Whitewalls fitted as standard.

INSTRUMENTS: Speedometer, fuel gauge, water temperature gauge, oil pressure warning light. / Heater and turn signals fitted as standard equipment.

PERFORMANCE: Max. speed: 80 mph. / Min. turn radius: 16 ft. / Fuel economy: up to 40 mpg. / Tank capacity: 11.0 U.S. gals.



DATSUN "CEDRIC" SEDAN

ENGINE: 4-cylinder, 1,883 cc, o.h.v. / bore: 3.35 in., stroke: 3.27 in. / 95 BHP @ 5000 rpm. / Compression ratio: 8.5:1.

DIMENSIONS: Length overall: 180.7 in. / Width overall: 66.5 in. / Height overall: 59.3 in. / Wheelbase: 103.5 in. / Weight: 2,740 lbs.

ELECTRIC SYSTEM: 12-volt, 300-watt alternator with regulator. / 1.4 HP starter motor.

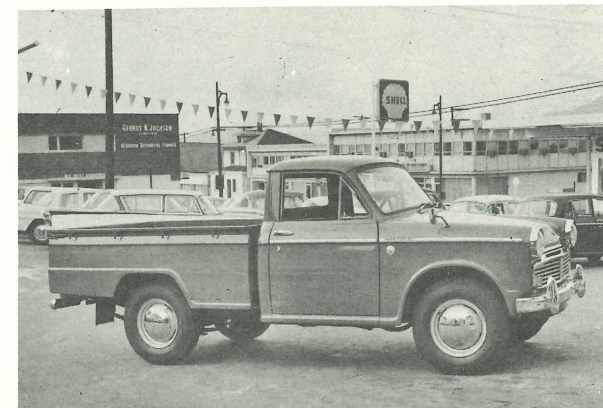
SUSPENSION: Front, independent coil spring, with hydraulic double-action shock absorbers, torsion bar stabilizer. / Rear: semi-elliptic 4-leaf springs with double-action hydraulic shock absorbers.

TRANSMISSION: 4 forward, 1 reverse, with synchromesh on 2nd, 3rd, and 4th, steering column shift. / Ratios: 1st: 3.945, 2nd: 2.402, 3rd: 1.490, 4th: 1.000, Reverse: 5.159 / Clutch: 48.5 sq. in. single dry disc, with cushioning spring. 3 speeds forward and 1 reverse is also available.

WHEELS AND TIRES: Steel disc wheels, 6.40 x 14, 4-ply Whitewalls fitted as standard.

BODY: 4-door, six seater. / Standard equipment includes twin wipers and washers, front and rear ashtrays, glove compartment, front and rear arm rests, lockable filler cap for gas tank, speedometer with trip recorder, rear trunk mat and spare wheel cover, trunk light.

PERFORMANCE: Max. speed: 85 mph / Min. turning radius: 18.3 ft. / Fuel economy: up to 32 mpg.



DATSUN "1200" PICKUP

ENGINE: 4-cylinder, 1,189 cc, o.h.v. / bore: 2.875 in., stroke: 2.796 in. / 60 BHP @ 5000 rpm. / Compression ratio: 8.2:1.

DIMENSIONS: Length overall: 164.8 in. / Width overall: 59.6 in. / Height overall: 61.2 in. / Wheelbase: 97.2 in. / Vehicle weight: 2,105 lbs. / Payload: 2,000 lbs. / Min. road clearance: 7.9 in. / Box: 72.8 in. long, 56.2 in. wide, 16.0 in. high.

ELECTRICAL SYSTEM: 12-volt, 200-watt generator with voltage regulator / 1.4 HP starter motor.

SUSPENSION: Front, independent torsion bar. / Rear, semi-elliptic springs, 5 leaves.

TRANSMISSION: 4 forward, 1 reverse. Synchromesh on 2nd, 3rd, and top. Steering column shift. / Ratios: 1st: 4.94, 2nd: 3.01, 3rd: 1.73, 4th: 1.00, Reverse: 6.46. / Clutch: 7.24 in. diameter single dry disc with cushioning spring. / Rear axle, hypoid bevel semi-floating with 5.143 ratio. (4.875 optional).

TIRES: Front: 6.00 x 14, 6-ply. / Rear: 6.00 x 14, 8-Ply.

PERFORMANCE: Max. speed: 70 mph. / Grade ability: 0.29. / Fuel economy: up to 32 mpg.



DATSUN "PATROL" Model KL60

ENGINE: 6-cylinder, 3,956 cc, o.h.v. / bore: 3 $\frac{3}{8}$ in., stroke: 4 $\frac{1}{2}$ in. / 135 BHP @ 3400 rpm / Compression ratio: 7.0:1 / Watertight to 2.3 ft.

DIMENSIONS: Length overall: 148.5 in. / Width overall: 66.5 in. / Height overall: 78.0 in. unloaded / Wheelbase: 86.6 in. / Gross vehicle weight: 4,575 lbs. / Vehicle weight, dry: 3,392 lbs. / Min. road clearance: 8.8 in. / Capacity: 6 adults, or 2 adults and 881 lbs.

SUSPENSION: Longitudinal semi-elliptic springs, with torsion bar type stabilizers front and rear. / Front springs: 43.3 in. span, 2.76 in. width on 3 leaves, 2.36 in. width on 1 leaf. / Rear springs: 51.2 in. span, 2.76 in. width, 5 leaves.

TRANSMISSION: 3 forward, 1 reverse. / Synchromesh on 2nd and 3rd. / All helical gears. / Ratios: 1st: 2.90, 2nd: 1.56, 3rd: 1.00, Reverse: 4.02. / Clutch: 10.83 in. diameter single dry disc with cushioning spring, mechanical pendulum pedal operation. / Transfer case: two speed auxiliary gear box with sliding select, 2 or 4-wheel drive in any gear. / Gear ratio: high: 1.00, low: 2.26. / Rear axle: semi-floating with hypoid bevel final drive, ratio: 4.10 / Front Axle: full floating with hypoid bevel final drive, tractor type constant velocity joints. Ratio: 4.10.

WHEELS AND TIRES: Steel disc wheels, size 450E x 16, with 6.50 x 16 6PRT grip-type treads front and rear. / Light truck rib, or passenger rib tires may be fitted as options.

BODY: All-steel, with removable canvas top and sides. / Windshield folds forward, detachable doors have opening windows, rear gates swing open vertically for easy loading. / Optional extras include PTO unit for front, rear, or centre mounting.

PERFORMANCE: Max speed: 75 mph. / Max. grade ability: 0.625. / Min. turning radius: 16.5 ft.