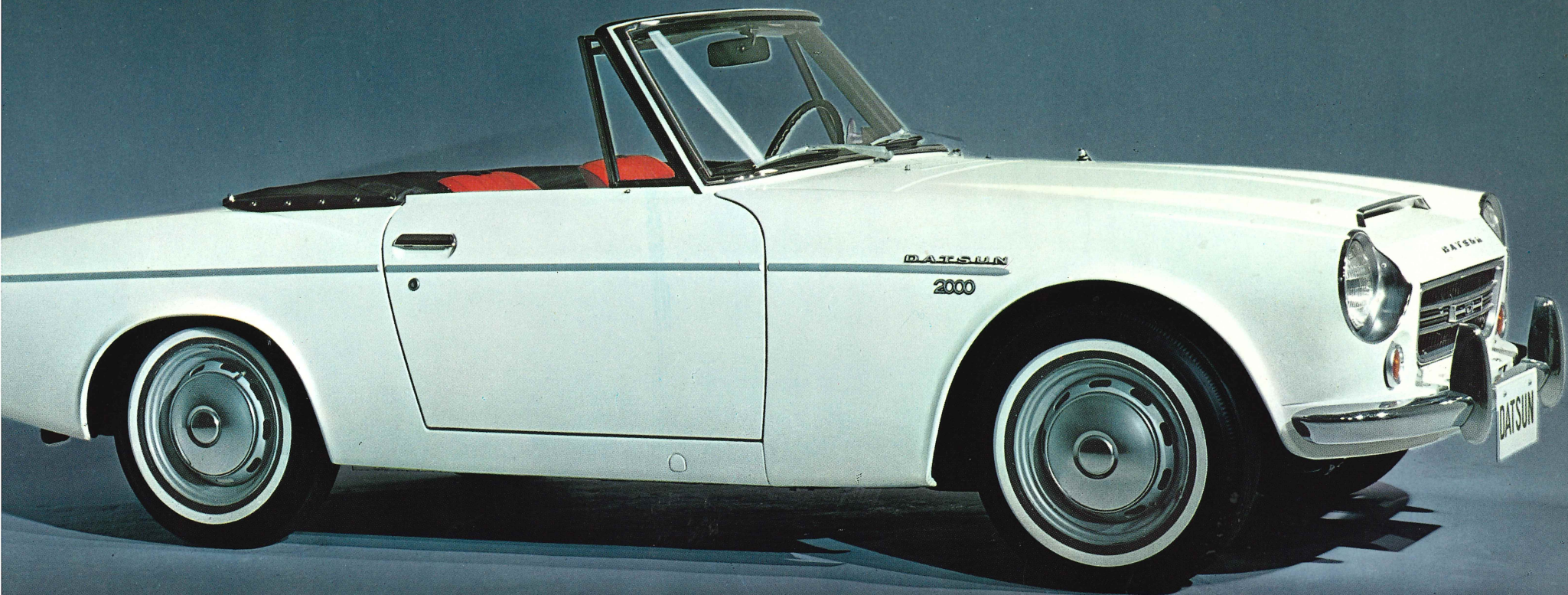




DATSUN 2000 SPORTS



...LING, CAPTIVATING! SPORTS CAR ...THE DISCRIMINATING

...en left in a cloud of dust? Well, you won't
...experience that helpless feeling again with a
...2000 Sports. From the time you take off
...ne you stop, you'll be way ahead of the others
...s to fast acceleration and powerful braking.

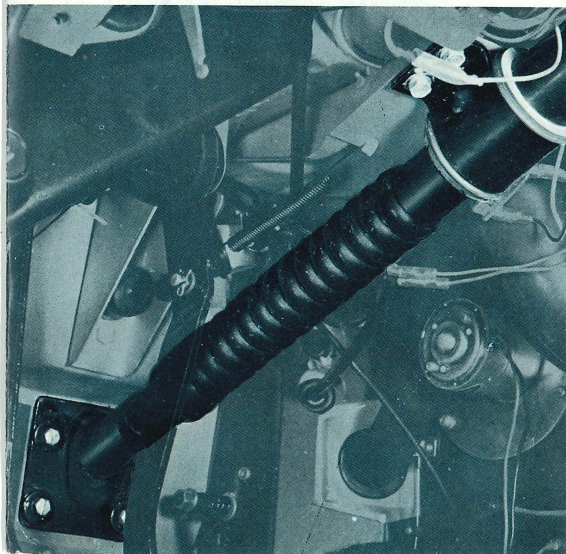
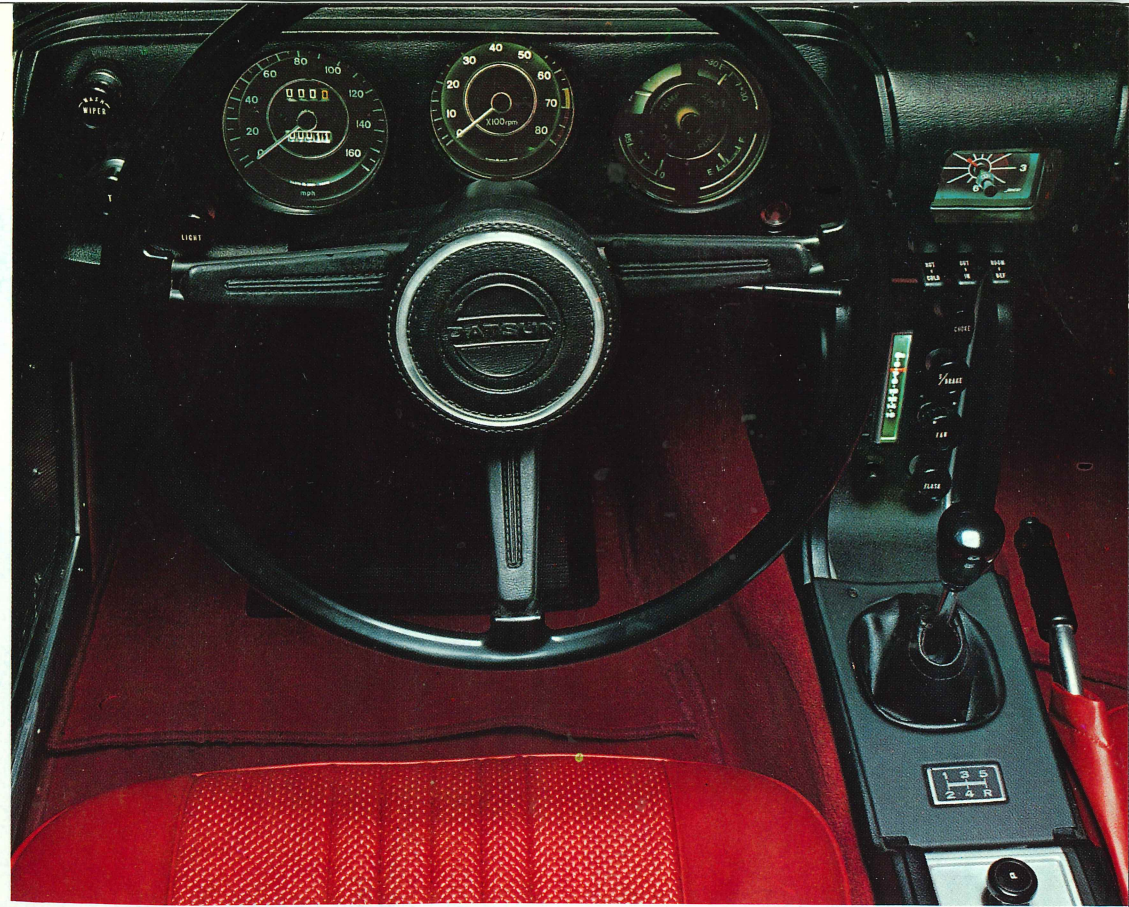
PERFORMANCE: The newly designed OHC, 2000cc
...develops 135 horsepower at 6,000 rpm and
...of 18.2 m-kg (131.6 ft-lb) at 4,400 rpm. It
...sustained high speeds of up to 190kph (118

mph) and SS 1/4 mile 16.9 seconds fast acceleration
at your disposal—performances unmatched by any
other sports car in the same price range. Five-speed,
fully synchromeshed transmission provides just the
right power through all speeds when and where you
need it.

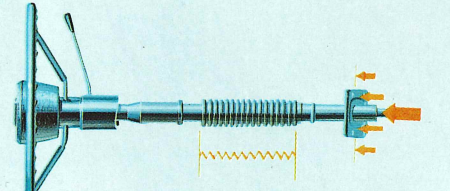
MANEUVERABILITY: All controls and switches are
located within easy reach of the driver for maximum
control efficiency and the meters and gauges are
conveniently grouped and designed for accurate, at-
a-glance readings from behind the wheel.

SAFETY: The collapsible steering column that tele-
scopes up to 150mm (5.9 inches) under impact and

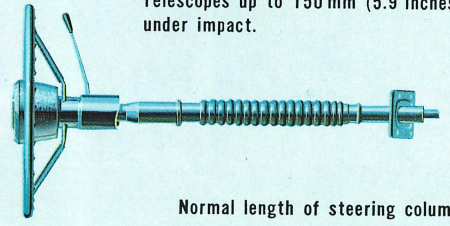
the fully padded interior parts, including dashboard,
horn button and spokes on steering wheel, and wind-
shield frame, are the new safety features. Other
standard safety features include: new tandem master
cylinder brake system—with discs up front and big
drum brakes with new aluminum cooling fins in the
rear—that provides smooth, straight-line stopping at
all speeds without brake fade, brake safety light and
switch, combination meters finished in reflection-free
black, wide adjustable bucket seats with three-point
type seat belts, laminated windscreen, break-away
inside mirror stay, safety door latches, and powerful
heater defrosting system.



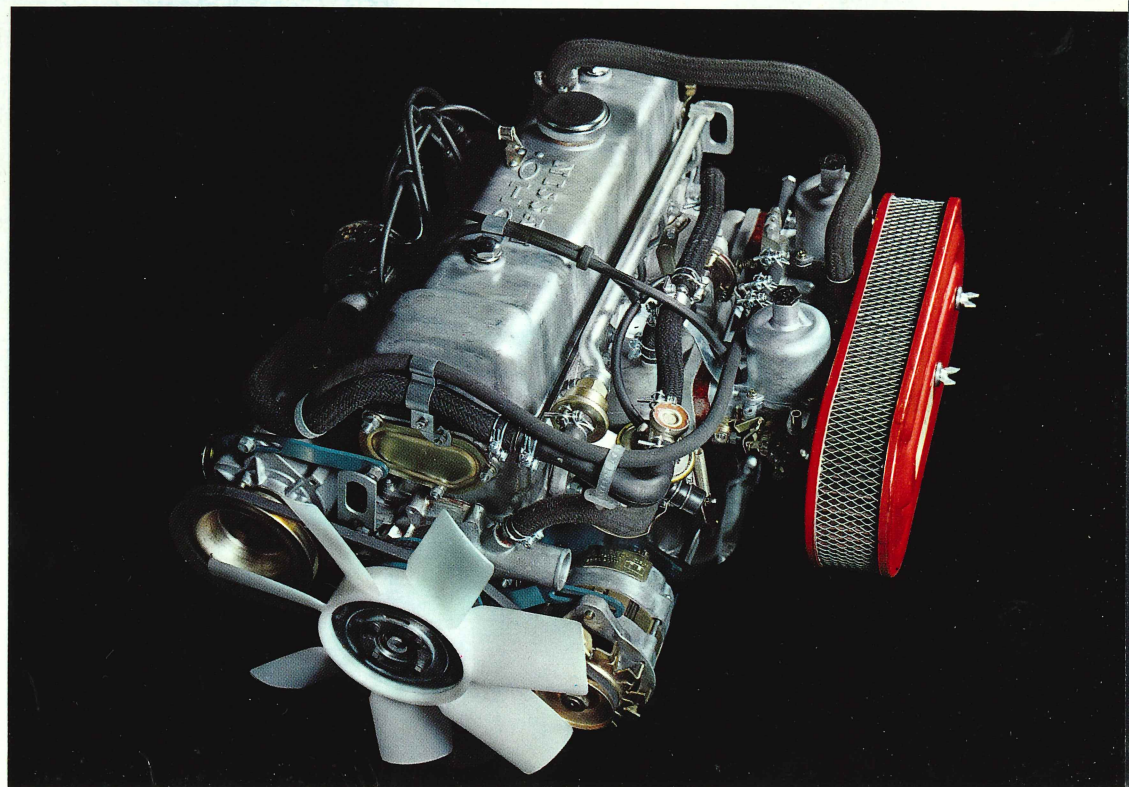
Collapsible Steering Column



Telescopes up to 150 mm (5.9 inches) under impact.



Normal length of steering column



DATSUN 2000 SPORTS SPECIFICATIONS

MODEL: DATSUN 2000 SPORTS

TYPE: SR(L) 311-(U)

DIMENSIONS & WEIGHT:

| | |
|---------------------|---------------------------------|
| Overall Length | 3,955 mm (155.7 in) |
| Overall Width | 1,495 mm (58.9 in) |
| Overall Height | 1,325 mm (52.2 in) |
| Wheelbase | 2,280 mm (89.8 in) |
| Tread, Front | 1,275 mm (50.2 in) |
| Rear | 1,200 mm (47.2 in) |
| Vehicle Weight | 950 kg (2,094 lbs) |
| | 960 kg (2,117 lbs)...for U.S.A. |
| Seating Capacity | 2 persons |
| Min. Road Clearance | 140 mm (5.5 in) |

PERFORMANCES:

| | |
|------------------------------------|--|
| Acceleration SS400 m (SS½ mile) | 16.9 sec. (16.0 sec. with optional solex carburetor) |
| Max. Speed | 190 km/h (118.0 mile/h) [200 km/h (124.3 mile/h) with optional solex carburetor] |
| Max. Grade Ability (sin θ) | 0.506 (0.537 with optional solex carburetor) |
| Min. Turning Circle | 9.8 m (32.2 ft.) |

ENGINE:

Model U20. Gasoline engine. Water-cooled. 4-cycle. OHC. 4-cylinder, in-line. Bore 87.2 mm (3.43 in). Stroke 83 mm (3.26 in.). Displacement 1,982 cc (120.9 cu. in.). Max. BHP 135 at 6,000 rpm (SAE). Max. torque 18.2 m·kg (131.6 ft.-lbs.) at 4,400 rpm (SAE). Compression ratio 9.5 to 1.

FUEL SYSTEM:

Variable venturi, side draft carburetors. Mechanical diaphragm pump. Viscous type air cleaner. Fuel tank capacity 43 liters (11.4 U.S. gal.).

LUBRICATION SYSTEM:

Pressure feed with full-flow type oil filter. Gear type pump. Oil pan capacity 4.1 liters (1.08 U.S. gal.).

IGNITION SYSTEM:

Coil and distributor with automatic mechanical and vacuum controls.

COOLING SYSTEM:

Pressurized radiator. Centrifugal pump. Pellet type thermostat and fan. Radiator capacity 8.5 liters (2.25 U.S. gal.).

ELECTRICAL SYSTEM:

12 volt, 50 amp. hr. battery. 300 watt alternator with regulator. 1.4 hp magnetic shift starter.

CLUTCH:

Single, dry disc with diaphragm springs. Diameter 200 mm (7.87 in.).

TRANSMISSION:

5 forward speeds and 1 reverse. All synchromeshed on forward gears. Gear ratios 1st 2.957, 2nd 1.858, 3rd 1.311, 4th 1.000, top 0.852 and reverse 2.922. Gear shift lever on central floor.

REAR AXLE:

Semifloating axle with torque rod. Hypoid bevel gear. Gear ratio 3.700.

FRONT SUSPENSION:

Independent coil springs with hydraulic double-acting shock absorbers.

REAR SUSPENSION:

Semielliptic leaf springs. Hydraulic doubleacting shock absorbers.

STEERING:

Left- or right-hand drive. Cam and lever type gear. Gear ratio 14.8 to 1. Three-spoke steering wheel. Diameter 400 mm (15.7 in.).

BRAKES:

Hydraulic tandem master cylinder. Discs at front. Leading and trailing shoes at rear. Front diameter 284 mm (11.2 in.). Rear drum with aluminum fin, diameter 228.6 mm (9.0 in.). Parking brake mechanically operated on rear wheels only.

WHEELS AND TIRES:

Steel disc wheels. 5.60S-14-4PR tires.

LAMPS:

Two sealed-beam headlamps. Two front parking and turn signal lamps. Two tail and stop lamps. Two rear turn signal lamps. Rear licence lamp. Map lamp. Reverse lamp. Reflectors.

INSTRUMENTS:

Speedometer with trip recorder and main beam indicator lamp. Tachometer with turn indicator lamps. Fuel gauge. Ammeter. Oil pressure gauge. Temperature gauge. Windshield washer and wiper knob. Lighting switch. Throttle controls. Instrument brightness control knob.

FRAME:

Pressed steel box section with X member.

BODY WORKS:

Two-door. Two-seater. Open type with canvas top. All-steel body fully upholstered with vinyl leather. Laminated windshield glass. Roll-up type door glass. Plastic rear window. Glove box. Separate housing beneath instrument panel containing choke knob and brake safety light switch.

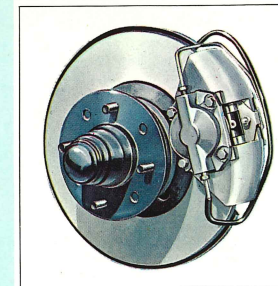
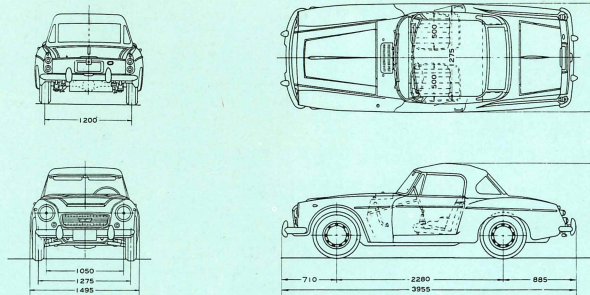
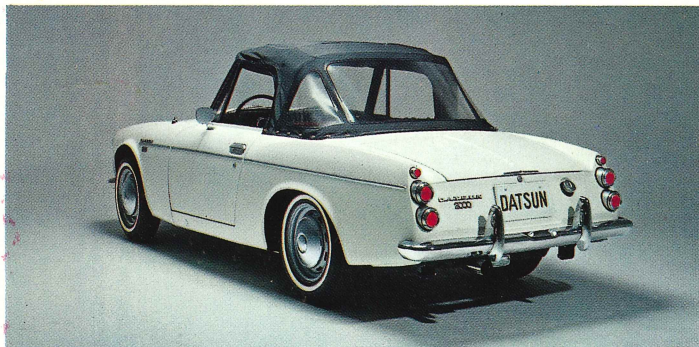
STANDARD EQUIPMENT:

Floor carpet. Adjustable bucket type seats. Seat belt anchorages. Three-point type seat belts. Ash tray and cigarette lighter in center console. Double horns. Outside and break-away inside rear view mirrors. Tonneau cover. Sunvisors. Steering lock with ignition key. Collapsible steering column. Electric clock.

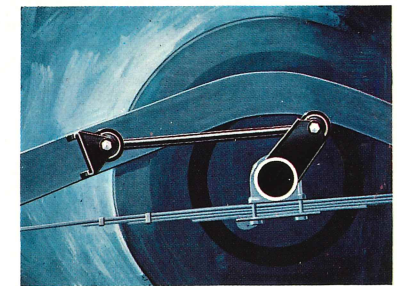
OPTIONAL EQUIPMENT:

Heater (standard for U.S.A.). Radio. Hazard warning switch (standard for U.S.A.). Side marker lamp (not available in U.S.A.). Passing light (left-hand model only). Roll bar and headrest unit. Headrest (right-hand model only) White side wall tire.

These specifications are subject to change without notice.



Front Disc Brake



New torque rod in rear axle



NISSAN MOTOR CO., LTD.
EXPORT DIVISION

Nissan Bldg., Ginza-Higashi, Chuo-ku, Tokyo, Japan

1968